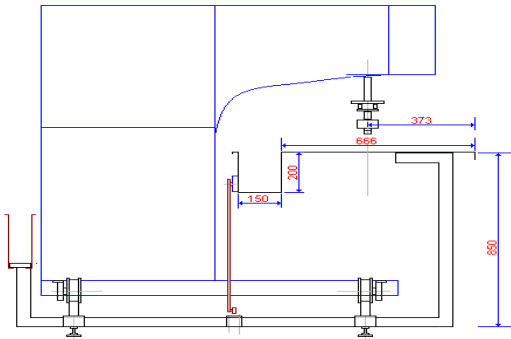


TRAVELLING FLOOR MOUNTED HIGH FREQUENCY WELDER

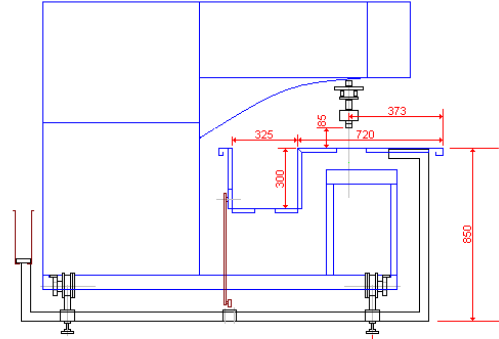
Models available	MV08	MV15	MV20	MV25	MV30
Power output	8 KW	15 KW	20 KW	25 KW	30 KW
Power input	11 KVA	20 KVA	30 KVA	35 KVA	40 KVA
Maximum weld length	900 mm.	1200 mm.	1200 mm.	1500 mm.	1500 mm.
Table Construction					
Modular with each section 1 m. long					
Small Trough 150mm (W) X 200mm (D)	✓	X	X	X	X
Medium Trough 325mm (W) X 300mm (D)	✓	✓	✓	X	X
Super Trough 450mm (W) X 450mm (D)	✓	✓	✓	✓	✓
Press					
Type	Pneumatic				
Daylight	85 mm.				
Protection	Available				
Air pressure control	Electronically controlled and available as program parameter				
Weld Bar movement	Positioning by means of four way joy-stick				
Air pressure	9 Kg/sq. cm.				
Control system					
Control component	Programmable Logic Controller (PLC)				
Human Machine Interface	5.7" Colour Touch Panel				
No. of programs	800				
Program parameters	Pre-heat time, Heat time, Cool time, Power Level, Air pressure, Travel distance, Travel speed				
Seaming head travel	With inverter driven motor and ten step speed control Travel command through four way joy-stick				
Output power control	As program parameter adjustable in steps of 0.01%				
Miscellaneous features					
Weld bar release	Available on touch panel				
Weld bar area lighting	Available				
Weld bar cooling	Available with forced fluid and radiator				
Machine usage log	Available as 8 day hourly log				
Flash protection	Available				



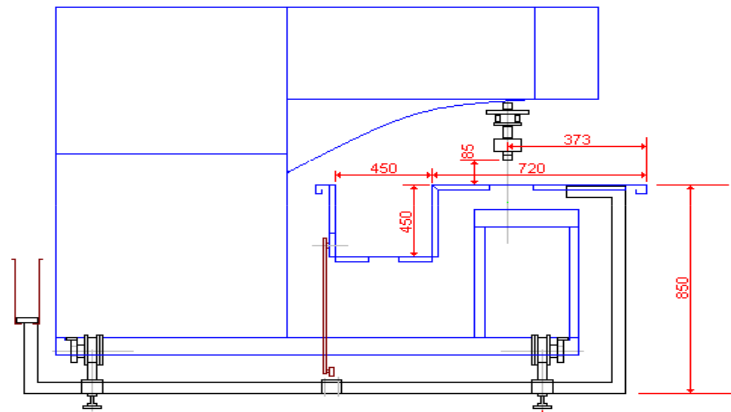
#4 & 5, Building 6/A, Damodar Park, L.B.S. Road,
Ghatkopar (West), Mumbai - 400 086, INDIA
Phone : +91-22-25003926 Fax : +91-22-25001927
E-mail : info@digicon.co.in
Website : www.digiconmicrosystems.com



MV08 on SMALL TROUGH TABLE



MV08 / MV15 / MV20 on MEDIUM TROUGH TABLE



MV08 / MV15 / MV20 / MV25 / MV30 on SUPER TROUGH TABLE



#4 & 5, Building 6/A, Damodar Park, L.B.S. Road,
 Ghatkopar (West), Mumbai - 400 086, INDIA
 Phone : +91-22-25003926 Fax : +91-22-25001927
 E-mail : info@digicon.co.in
 Website : www.digiconmicrosystems.com