



# Flametech Switch Gears

<https://www.indiamart.com/flametechswitchgears/>

We at Flame-Tech switch Gears, are leaders in development & Manufacture of high Technology Quality Products of various types of electrical equipments, which are meant for sale application in hazardous location.



## About Us

We at **Flame-Tech switch Gears**, are leaders in development & Manufacture of high Technology Quality Products of various types of electrical equipments, which are meant for sale application in hazardous location. Explosion Protected equipments are meant for installation and use in these Hazardous location for ensure safety of Plant, equipment and Personal and to ensure safety and reliability of Operation in Explosible as well as explosive atmosphere, our products are already recognized in verious industries such a petrochemicals, refinery, oil and gas oil mines, pesticides, chemicals, Fertilizers, Bulk Drugs, Pharmaceuticals and Ordnance Factories. Flame-Tech switch Gears Offer a comprehensive & technologically innovative range of Explosion Protected Equipments Complying with all common international Standards. Flame-Tech switch Gears Manufacturing unit is equipped with state of art machine shop, paint shop, assembly layout, with cad and design facilities makes it one of the best source in India. Our aimis to Assist our esteemed customers in Selection of appropriate equipment. If you desire to know more about our Products.

**For more information, please visit**

<https://www.indiamart.com/flametechswitchgears/profile.html>



# LIGHTING FITTING



Lighting Fitting



Light Fitting



Flame Proof Well Glass  
Fixture Lighting

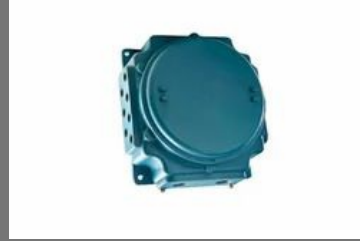


Flameproof Reactor Vessel  
Lamp

# JUNCTION BOX



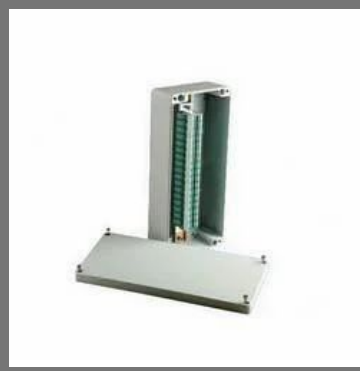
Flameproof Junction Box Multi Way



Flameproof Junction Box Multi Way



Flameproof Junction Box Four Way



Weatherproof Stainless Steel Junction Boxes

# FLAMEPROOF SWITCHGEARS



Flameproof Rotary  
Switchgears



Flame Proof Plug And Socket



Flameproof Control  
Switchgear Box



Light Fittings Switchgears

# FLAMEPROOF ROOM FITTINGS



Flameproof Clean Room Fittings



FLP Clean Room Fitting



Flameproof Room Fittings



Weather Flameproof Room Fittings

# MINING PRODUCTS



Mining Lamp



Mining Junction Box



Mining Light



Mining LED Light

# INDUSTRIAL AUTOMATIONS



PLC Based Control Panel



Relay Based Instrumentation Panel



Purge Panel



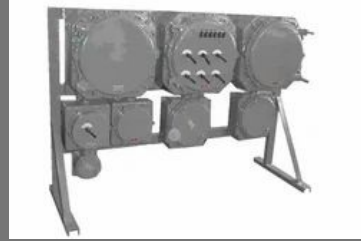
MCMS Based Control Panel



# FLAMEPROOF PANELS



Electrical Flameproof Panels



Flameproof Control Panels



Flameproof Panels



NFLP Control Panels

# FLAMEPROOF ACCESSORIES



Flameproof Cable Glands



Flameproof Accessories



Flameproof Blind Plugs

## OTHER PRODUCTS:



Flameproof Tube Light Fixture



Weatherproof Junction Boxes



Flameproof Switchgears



Electrical Flameproof Room Fittings

# Factsheet

Year of Establishment : 2013

---

Nature of Business : Manufacturer

---

Total Number of Employees : 11 to 25 People

---



## CONTACT US

### **Flametech Switch Gears**

Contact Person: Pradeep Patel

Plot No. 2603/2, Near Bank Of Baroda 3rd Phasee, GIDC, Valsad  
Vapi - 396195, Gujarat, India



+91-8043868323



<https://www.indiamart.com/flametechswitchgears/>