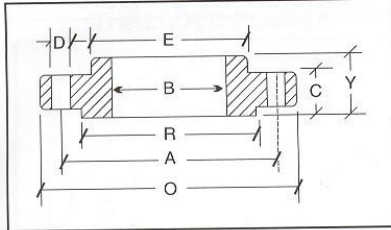
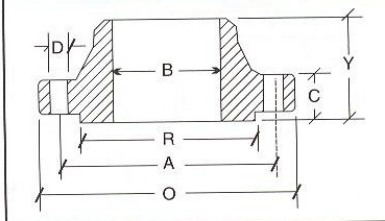
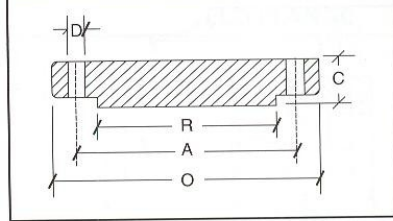


SLIP-ON FLANGE**WELDING NECK FLANGE****BLIND FLANGE****DIMENSIONS OF CLASS 150 FLANGES AS PER ANSI B 16.5**

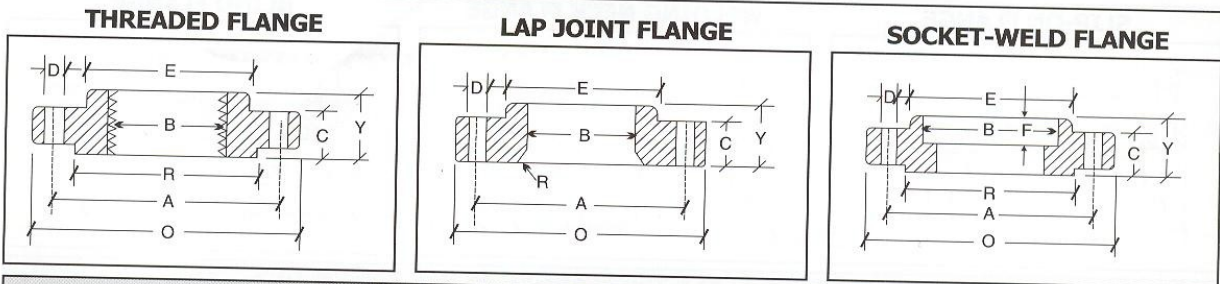
Nominal Pipe Size	Flange Dia O	Dia of Bolt Circle A	Dia of Bolt Holes D	No. of Holes	Thk of Flange C	Dia of Hub E	Length through Hub			Dia of Bore		Dia of Hub R	Depth of Socket R
							S/O & SW	W/N	L/J	S/O & SW	L/J		
							Y	Y	Y	B	B		
15	88.9	60.3	15.9	4	11.1	30.2	15.9	47.6	15.9	22.3	22.9	34.9	9.5
20	98.4	69.8	15.9	4	12.7	38.1	15.9	52.4	15.9	27.7	28.2	42.9	11.1
25	107.9	79.4	15.9	4	14.3	49.2	17.5	55.6	17.5	34.5	35.0	50.8	12.7
32	117.5	88.9	15.9	4	15.9	58.7	20.6	57.1	20.6	43.2	43.7	63.5	14.3
40	127.0	98.4	15.9	4	17.5	65.1	22.2	61.9	22.2	49.5	50.0	73.0	15.9
50	152.4	120.6	19.0	4	19.0	77.8	25.4	63.5	25.4	62.0	62.5	92.1	17.5
65	177.8	139.7	19.0	4	22.2	90.5	28.6	69.8	28.6	74.7	75.4	104.8	19.0
80	190.5	152.4	19.0	4	23.8	107.9	30.2	69.8	30.2	90.7	91.4	127.0	20.6
100	228.6	190.5	19.0	8	23.8	134.9	33.3	76.2	33.3	116.1	116.8	157.2	23.8
125	254.0	215.9	22.2	8	23.8	163.5	36.5	88.9	36.5	143.8	144.5	185.7	23.8
150	279.4	241.3	22.2	8	25.4	192.1	39.7	88.9	39.7	170.7	171.4	215.9	27.0
200	342.9	298.4	22.2	8	28.6	246.1	44.4	101.6	44.4	221.5	222.2	269.9	31.7
250	406.4	361.9	25.4	12	30.2	304.8	49.2	101.6	49.2	276.3	277.4	323.8	33.3
300	482.6	431.8	25.4	12	31.8	365.1	55.6	114.3	55.6	327.1	328.2	381.0	39.7
350	533.4	476.2	28.6	12	34.9	400.0	57.1	127.0	79.4	359.1	360.2	412.7	41.3
400	596.9	539.7	28.6	16	36.5	457.2	63.5	127.0	87.3	410.5	411.2	469.9	44.4
450	635.0	577.8	31.7	16	39.7	504.8	68.3	139.7	96.8	461.8	462.3	533.4	49.2
500	698.5	635.0	31.7	20	42.9	558.8	73.0	144.5	103.2	513.1	514.3	584.2	54.0
600	812.8	749.3	34.9	20	47.6	663.6	82.5	152.4	111.1	615.9	615.9	692.1	63.5

DIMENSIONS OF CLASS 300 FLANGES AS PER ANSI B 16.5

Nominal Pipe Size	Flange Dia O	Dia of Bolt Circle A	Dia of Bolt Holes D	No. of Holes	Thk of Flange C	Dia of Hub E	Length through Hub			Dia of Bore		Dia of Hub R	Depth of Socket R
							S/O & SW	W/N	L/J	S/O & SW	L/J		
							Y	Y	Y	B	B		
15	95.2	66.7	15.9	4	14.3	38.1	22.2	52.4	22.2	22.3	22.9	34.9	9.5
20	117.5	82.5	19.0	4	15.9	47.6	25.4	57.1	25.4	27.7	28.2	42.9	11.1
25	123.8	88.9	19.0	4	17.5	54.0	27.0	61.9	27.0	34.5	35.0	50.8	12.7
32	133.3	98.4	19.0	4	19.0	63.5	27.0	65.1	27.0	43.2	43.7	63.5	14.3
40	155.6	114.3	22.2	4	20.6	69.8	30.2	68.3	30.2	49.5	50.0	73.0	15.9
50	165.1	127.0	19.0	8	22.2	84.1	33.3	69.8	33.3	62.0	62.5	92.1	17.5
65	190.5	149.2	22.2	8	25.4	100.0	38.1	76.2	38.1	74.7	75.4	104.8	19.0
80	209.5	168.3	22.2	8	28.6	117.5	42.9	79.4	42.9	90.7	91.4	127.0	20.6
100	254.0	200.0	22.2	8	31.8	146.0	47.6	85.7	47.6	116.1	116.8	157.2	23.8
125	279.4	234.9	22.2	8	34.9	177.8	50.8	98.4	50.8	143.8	144.5	185.7	-
150	317.5	269.9	22.2	12	36.5	206.4	52.4	98.4	52.4	170.7	171.4	215.9	-
200	381.0	330.2	25.4	12	41.3	260.3	61.9	111.1	61.9	221.5	222.2	269.9	-
250	444.5	387.3	28.6	16	47.6	320.7	66.7	117.5	95.2	276.3	277.4	323.8	-
300	520.7	450.8	31.7	16	50.8	374.6	73.0	130.2	101.6	327.1	328.2	381.0	-
350	584.2	514.3	31.7	20	54.0	425.4	76.2	142.9	111.1	359.1	360.2	412.7	-
400	647.7	571.5	34.9	20	57.2	482.6	82.5	146.0	120.6	410.5	411.2	469.9	-
450	711.2	628.5	34.9	24	60.3	533.4	88.9	158.7	130.2	461.8	462.3	533.4	-
500	774.7	685.8	34.9	24	63.5	587.4	95.2	161.9	139.7	513.1	514.3	584.2	-
600	914.4	812.8	41.3	24	69.8	701.7	106.4	168.3	152.4	615.9	615.9	692.1	-

1) All dimensions are in Millimeters.

2) Flanges except Lap Joint will be furnished with (1.6) Raised Face, which is included in "Thickness (C)" and "Length through Hub (Y)".



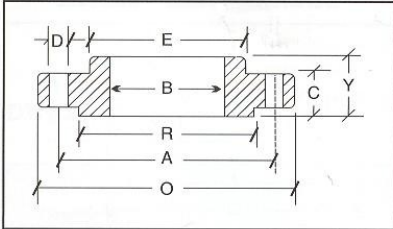
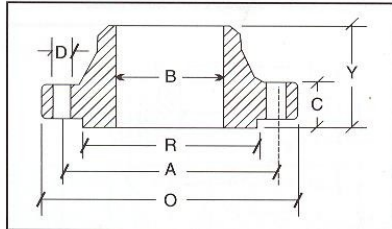
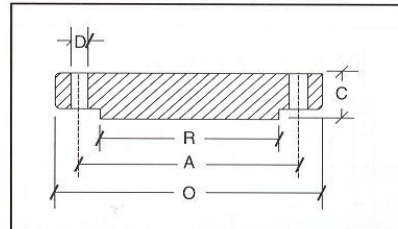
DIMENSIONS OF CLASS 600 FLANGES AS PER ANSI B 16.5

Nominal Pipe Size	Flange Dia O	Dia of Bolt Circle A	Dia of Bolt Holes D	No. of Holes	Thk of Flange C	Dia of Hub E	Length through Hub			Dia of Bore		Dia of Hub R	Depth of Socket R
							S/O & SW Y	W/N Y	L/J Y	S/O & SW B	L/J B		
15	95.2	66.7	15.9	4	14.3	38.1	22.2	52.4	22.3	22.3	22.8	34.9	9.5
20	117.5	82.5	19.0	4	15.9	47.6	25.4	57.1	25.4	27.7	28.1	42.9	11.1
25	123.8	88.9	19.0	4	17.5	54.0	27.0	61.9	26.9	34.5	35.0	50.8	12.7
32	133.3	98.4	19.0	4	20.6	63.5	28.6	66.7	28.4	43.2	43.6	63.5	14.2
40	155.6	114.3	22.2	4	22.2	69.8	31.7	69.8	31.7	49.5	50.0	73.0	15.8
50	165.1	127.0	19.0	8	25.4	84.1	36.5	73.0	36.5	62.0	62.4	92.1	17.4
65	190.5	149.2	22.2	8	28.6	100.0	41.3	79.4	41.1	74.7	75.4	104.8	19.0
80	209.5	168.3	22.2	8	31.8	117.5	46.0	82.5	45.9	90.7	91.4	127.0	-
100	273.0	215.9	25.4	8	38.1	152.4	54.0	101.6	53.8	116.1	116.8	157.2	-
125	330.2	266.7	28.6	8	44.4	188.9	60.3	114.3	60.4	143.8	141.5	185.7	-
150	355.6	292.1	28.6	12	47.6	222.2	66.7	117.5	66.5	170.7	171.4	215.9	-
200	419.1	349.2	31.7	12	55.6	273.0	76.2	133.3	76.2	221.5	222.2	269.9	-
250	508.0	431.8	34.9	16	63.5	342.9	85.7	152.4	111.2	276.3	277.3	323.8	-
300	558.8	488.9	34.9	20	66.7	400.0	92.1	155.6	117.3	327.1	328.1	381.0	-
350	603.2	527.0	38.1	20	69.9	431.8	93.7	165.1	127.0	359.1	360.1	412.7	-
400	685.8	603.2	41.3	20	76.2	495.3	106.4	177.8	139.7	410.5	411.2	469.9	-
450	742.9	654.0	44.4	20	82.6	546.1	117.5	184.1	152.4	461.8	462.2	533.4	-
500	812.8	723.9	44.4	24	88.9	609.6	127.0	190.5	165.1	513.1	514.3	584.2	-
600	939.8	838.2	50.8	24	101.6	717.5	139.7	203.2	184.1	615.9	615.9	692.1	-

DIMENSIONS OF CLASS 900 FLANGES AS PER ANSI B 16.5

Nominal Pipe Size	Flange Dia O	Dia of Bolt Circle A	Dia of Bolt Holes D	No. of Holes	Thk of Flange C	Dia of Hub E	Length through Hub			Dia of Bore		Dia of Hub R	Depth of Socket R
							S/O & SW Y	W/N Y	L/J Y	S/O & SW B	L/J B		
15	120.6	82.5	22.2	4	22.2	38.1	31.7	60.3	31.7	22.3	22.8	34.9	9.5
20	130.2	88.9	22.2	4	25.4	44.4	34.9	69.8	35.0	27.7	28.1	42.9	11.1
25	149.2	101.6	25.4	4	28.6	52.4	41.3	73.0	41.1	34.5	35.0	50.8	12.7
32	158.7	111.1	25.4	4	28.6	63.5	41.3	73.0	41.1	43.2	43.6	63.5	14.2
40	177.8	123.8	28.6	4	31.8	69.8	44.4	82.5	44.4	49.5	50.0	73.0	15.8
50	215.9	165.1	25.4	8	38.1	104.8	57.1	101.6	57.1	62.0	62.4	92.1	17.4
65	244.5	190.5	28.6	8	41.3	123.8	63.5	104.8	63.5	74.7	75.4	104.8	19.0
80	241.3	190.5	25.4	8	38.1	127.0	53.9	101.6	53.8	90.7	91.4	127.0	-
100	292.1	234.9	31.7	8	44.4	158.7	69.8	114.3	69.8	116.0	116.8	157.1	-
125	349.2	279.4	35.0	8	50.8	190.5	79.3	127.0	79.2	143.7	144.5	185.7	-
150	381.0	317.5	31.7	12	55.6	234.9	85.8	139.7	85.8	170.6	171.4	215.9	-
200	469.9	393.7	38.1	12	63.5	298.4	101.6	162.0	144.3	221.4	222.2	269.9	-
250	546.1	469.9	38.1	16	69.8	368.3	107.9	184.1	127.0	276.3	277.3	323.8	-
300	609.6	533.4	38.1	20	79.3	419.1	117.4	200.0	142.7	327.1	328.1	381.0	-

1) All dimensions are in Millimeters.
 2) Flanges except Lap Joint will be furnished with (6.35) Raised Face, which is not included in "Thickness (C)" and "Length through Hub (Y)".

THREADED FLANGE**LAP JOINT FLANGE****SOCKET-WELD FLANGE****DIMENSIONS OF CLASS 1500 FLANGES AS PER ANSI B 16.5**

Nominal Pipe Size	Flange Dia O	Dia of Bolt Circle A	Dia of Bolt Holes D	No. of Holes	Thk of Flange C	Dia of Hub E	Length through Hub			Dia of Bore		Dia of Hub R	Depth of Socket R
							S/O & SW	W/N	L/J	S/O & SW	L/J		
							Y	Y	Y	B	B		
15	120.6	82.5	22.2	4	22.2	38.1	31.7	60.3	31.7	22.3	22.8	34.9	9.5
20	130.2	88.9	22.2	4	25.4	44.4	34.9	69.8	34.9	27.7	28.1	42.9	11.1
25	149.2	101.6	25.4	4	28.6	52.4	41.3	73.0	41.3	34.5	35.0	50.8	12.7
32	158.7	111.1	25.4	4	28.6	63.5	41.3	73.0	41.3	43.2	43.6	63.5	14.2
40	177.8	123.8	28.6	4	31.8	69.8	44.4	82.5	44.4	49.5	50.0	73.0	15.8
50	215.9	165.1	25.4	8	38.1	104.8	57.1	101.6	57.1	62.0	62.0	92.1	17.4
65	244.5	190.5	28.6	8	41.3	123.8	63.5	104.8	63.5	74.7	75.4	104.8	19.0
80	266.7	203.2	31.7	8	47.6	133.3	73.0	117.5	73.0	90.7	91.4	127.0	-
100	311.1	241.3	34.9	8	54.0	161.9	90.5	123.0	90.4	116.1	116.8	157.2	-
125	374.6	292.1	41.3	8	73.0	196.8	104.8	155.6	104.8	143.8	144.5	185.7	-
150	393.7	317.5	38.1	12	82.6	228.6	119.1	171.4	119.1	170.7	171.4	215.9	-
200	482.6	393.7	44.4	12	92.1	292.1	142.9	212.7	142.8	221.5	222.2	269.9	-
250	584.2	482.6	50.8	12	107.9	368.3	158.7	254.0	177.8	276.3	277.3	323.8	-
300	673.1	571.5	54.0	16	123.8	450.8	181.0	282.5	218.9	327.1	328.1	381.0	-

DIMENSIONS OF CLASS 2500 FLANGES AS PER ANSI B 16.5

Nominal Pipe Size	Flange Dia O	Dia of Bolt Circle A	Dia of Bolt Holes D	No. of Holes	Thk of Flange C	Dia of Hub E	Length through Hub			Dia of Bore		Dia of Hub R	Depth of Socket R
							S/O & SW	W/N	L/J	S/O & SW	L/J		
							Y	Y	Y	B	B		
15	133.3	88.9	22.2	4	30.2	42.9	39.7	73.0	39.7	22.3	22.3	34.9	-
20	139.7	95.2	22.2	4	31.7	50.8	42.9	79.4	42.9	27.7	27.7	42.9	-
25	158.7	107.9	25.4	4	34.9	57.1	47.7	88.9	47.7	34.5	34.5	50.8	-
32	184.1	130.2	28.6	4	38.1	73.0	52.4	95.2	52.4	43.2	43.2	63.5	-
40	203.2	146.0	31.7	4	44.4	79.4	60.3	111.1	60.3	49.5	49.5	73.0	-
50	234.9	171.4	28.6	8	50.8	95.2	69.8	127.0	69.8	62.4	62.0	92.1	-
65	266.7	196.8	31.7	8	57.1	114.3	79.4	142.9	79.4	74.7	74.7	104.8	-
80	304.8	228.6	34.9	8	66.7	133.3	92.1	168.3	92.1	90.7	90.7	127.0	-
100	355.6	273.0	41.3	8	76.2	165.1	107.9	190.5	107.9	116.1	116.1	157.2	-
125	419.1	323.8	47.6	8	92.1	203.2	130.0	228.6	130.0	143.8	143.8	185.7	-
150	482.6	368.3	54.0	8	107.9	234.9	152.4	273.0	152.4	170.7	170.7	215.9	-
200	552.4	438.1	54.0	12	127.0	304.8	177.8	317.5	177.8	221.5	221.5	269.9	-
250	673.1	539.7	66.7	12	165.1	374.6	228.6	419.1	228.6	276.3	276.3	323.8	-
300	762.0	619.1	73.0	12	184.1	441.3	254.0	463.5	254.0	327.1	327.1	381.0	-

1) All dimensions are in Millimeters.

2) Flanges except Lap Joint will be furnished with (6.35) Raised Face, which is not included in "Thickness (C)" and "Length through Hub (Y)".