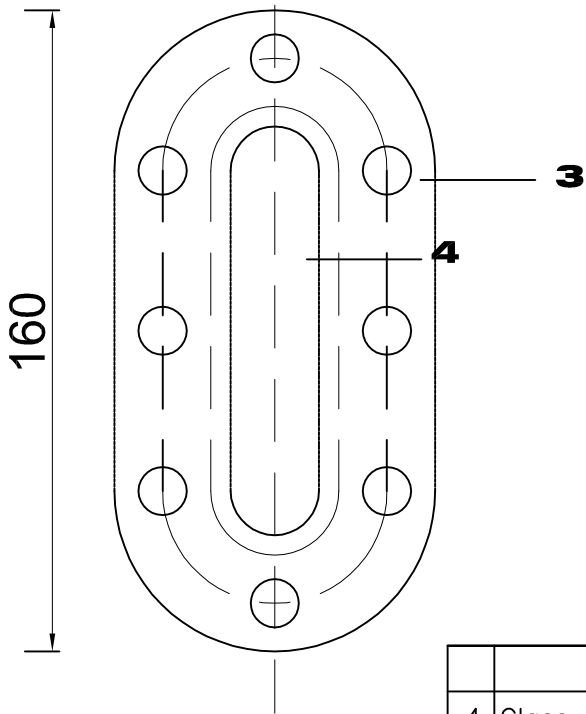
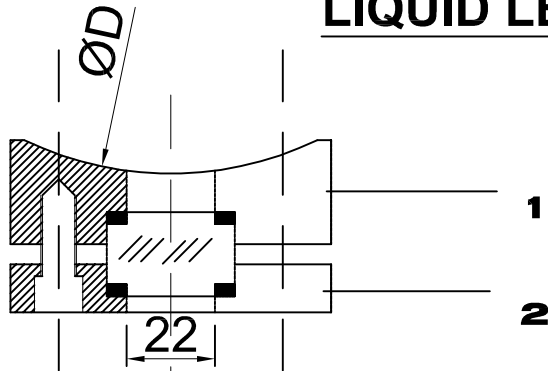



Hydrostatic Test Pressure	10 Kgs./Sq. Cms	Design Reference	ASME/ANSI-B16.5-1988 Ed
		Testing Reference	API-598-7Th-ED
Ends to	Butt Weld	NDT-ON REQUEST	100 % Radiography
		Weight	@ 2 Kgs.

LIQUID LEVEL INDICATOR-PAD TYPE



Cast Through Lost-Wax Process
 Dimensional Accuracy
 Interchangability of parts
 All Dimensions are in mm
 Specially Designed for
 Thermosyphons

4	Glass	Soda Lime-Toughened	01	Transperent
3	Bolts	AISI-304/316	08	
2	Cover	ASTM A 351Gr. CF8/CF8M	01	
1	PAD	ASTM A 351Gr. CF8/CF8M	01	
No.	NAME	MATERIAL	Qty.Nos.	REMARKS

DRN	AMP	23/10	 PROCESS EQUIPMENT CORPORATION AHMEDABAD-380008,INDIA	CLIENT:
DGN	PMM	23/10		P.O.No.:
CHD	PMM	23/10		Drg No:
APPR				3 03 00002/3
DRG				Item Code.No.:3 03 00002/3
SCALE: NTS			TITLE:	
MATL: ASTM A 351 Gr.CF8/ -8M			ANCHOR SIGHT FLOW INDICATOR-PAD TYPE	