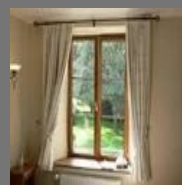


Shahi Exports

<https://www.indiamart.com/shahiexports/>

Shahi - started in 1974 at Delhi, Bangalore operations began on 1st July 1988 with 250 associates and 104 machines. Expansion by 60 times by last 30 years.



About Us

Shahi - started in 1974 at Delhi, Bangalore operations began on 1st July 1988 with 250 associates and 104 machines. Expansion by 60 times by last 30 years.

For more information, please visit

<https://www.indiamart.com/shahiexports/aboutus.html>



WOVEN LADIES FASHION

Products & Services



Woven Casual Tops



Woven Casual Bottoms



Cargo Shorts & Pants



Blouses

COTTON & COTTON BLENDED FABRICS



Hoddies



Flat Back Rib



Yarn Dyed Striper



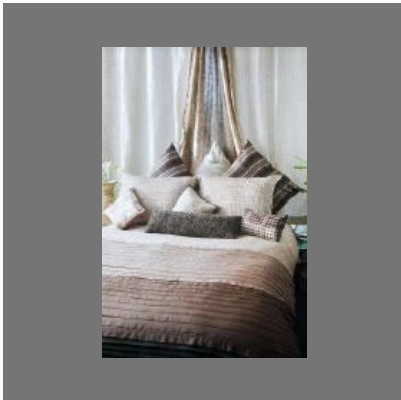
Sheer Jersey



Window



Fashion Accessories (belts)



Bed linen



Sheet Sets

MENSBOYS WEAR



Polo T Shirt



Raglon T Shirt



Crew Neck



Henley

WOMENS GIRLS WEARS



Cap Sleeve Top



Strap Tank Top



Tee



Camisole

WOVEN MENS TOPS



Tops Casual Wear



Tops Semi Casual Wear



Bottoms Casual Wear



Bottoms Semi Casual Wear

OTHER PRODUCTS:



Ladies Dresses



Interlock

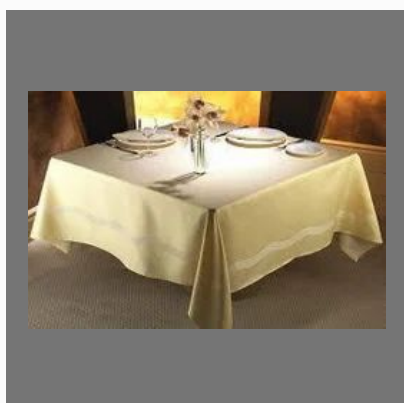


Table linen



Hoody

Factsheet



CONTACT US

Shahi Exports

Contact Person: Prakash

No. 37/1B, Arekere, Bannerghatta Road
Bengaluru - 560076, Karnataka, India



<https://www.indiamart.com/shahiexports/>