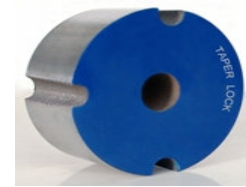


## TAPPER LOCK BUSH



### DID YOU KNOW THAT .....

- Available in Inches and millimeters
- Flush Mounting
- Sizes available 1108 - 5050

### HOW TO ORDER

#### EXAMPLE :- 1215X11

**1215 X11**

#### 1215 BUSHING SIZE

The bushing size is defined by 4 digits representing 2 numbers. First two digits represents maximum bore size & last two digits represents total length of bushing. For Example product no. 1215 has a maximum bore of 1.2" and total length of 1.5".

#### x11 BORE SIZE [11 MM.]

**BORE SIZE-MM.** Bore size are designated with the whole mm. only. which in inch size bores are also possible which is also followed by fraction. For example 1.5" diameter bore would be 1.1/2"

TAPER LOCK BUSH

Size	Bore mm		Screw Size
	Min.	Max.	
1008	9	25	1/4" Set Screw
1108	9	28	1/4" Set Screw
1210	11	32	3/8" Set Screw
1215	11	32	3/8" Set Screw
1310	14	35	3/8" Set Screw
1610	14	42	3/8" Set Screw
1615	14	42	3/8" Set Screw
2012	14	50	7/16" Set Screw
2517	16	60	1/2" Set Screw
2525	19	60	1/2" Set Screw
3020	25	75	5/8" Set Screw
3030	25	75	5/8" Set Screw
3525	35	90	1/2" Set Screw
3535	35	90	1/2" Set Screw
4040	40	100	5/8" Set Screw
4545	55	110	3/4" Set Screw
5050	70	125	7/8" Set Screw

FOR DEPENDABLE DRIVE COMPONENTS.....