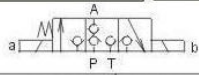


SOLENOID OPERATED DIRECTIONAL VALVES POPPET TYPE

TWO WAY - TWO POSITION

SIZE	04		SIZE	06		06D		SIZE	12	
NOMINAL PORT SIZE	6.5		NORMAL PORT SIZE	8		1		NORMAL PORT SIZE	14	
MAX FLOW RATE	U/min	25	MAX FLOW RATE	U/min	50	2		MAX FLOW RATE	U/min	150
	US gpm	6.5		US gpm	13	0.5			US gpm	39.5
MAX PRESSURE	bar	315	MAX PRESSURE	bar	250		MAX PRESSURE	bar	250	
	psi	4500		psi	3600			psi	3600	
CAVITY NUMBER	00.95	074	CAVITY NUMBER	00.95	065		CAVITY NUMBER	00.95	069	
NORMALIZED CAVITY	NCS	04/2	NORMALIZED CAVITY	NCS	06/2		NORMALIZED CAVITY	NCS	12/2	
MAX TIGHTENING TORQUE	Nm	40	MAX TIGHTENING TORQUE	Nm	50		MAX TIGHTENING TORQUE	Nm	70	
WEIGHT INCLUDING COIL	kg	0.230	WEIGHT INCLUDING COIL	kg	0.430		WEIGHT INCLUDING COIL	kg	0.540	
REF			REF					REF		
CAVITY DIMENSIONS	11.450		CAVITY DIMENSIONS	11.450				CAVITY DIMENSIONS	11.450	

◆ SPECIFICATIONS 規格



Model Number 型式號碼	Maximum Pressure 最大壓力 bar	Maximum Flow 最大流量 lpm	Weight 重量 Kg
LVSH-02G	315 (4500 psi)	35 (9.25 gpm)	2.4 (5.3 lbs)
Fluid Type 液體型式	ISO VG 32, 46, 68		
Viscosity 黏性 cSt	10~400 (59~1854 SSU)		
Operating Temperature 操作溫度 °C	-15~70 (-5~158°F)		
Contamination Level 污染標準	β _{0.5} ≥ 75, Under NAS Class 12, 25μ		
Surface Treatment 表面處理	Zinc Phosphate Compound 磷酸鹽化合物		

◆ SPECIFICATIONS 規格

Model Number 型式號碼	Maximum Pressure 最大壓力 bar	Maximum Flow 最大流量 lpm	Weight 重量 Kg
LVSH-03G	315 (4500 psi)	50 (13.21 gpm)	2.4 (5.3 lbs)
Fluid Type 液體型式	ISO VG 32, 46, 68		
Viscosity 黏性 cSt	10~400 (59~1854 SSU)		
Operating Temperature 操作溫度 °C	-15~70 (-5~158°F)		
Contamination Level 污染標準	β _{0.5} ≥ 75, Under NAS Class 12, 25μ		
Surface Treatment 表面處理	Zinc Phosphate Compound 磷酸鹽化合物		