



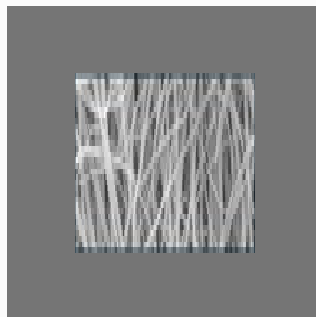
+91-8048361312

Jani Clays Pvt. Ltd.

<https://www.indiamart.com/jani-clays/>

Jani Clays is the latest venture of Jani Corporations focusing on bentonite based products and services. Our mining facilities are located at Kutch, Gujarat and processing plants at Kutch and Ahmedabad, Gujarat.

Our bentonite products are ...



About Us

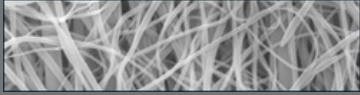
Jani Clays is the latest venture of Jani Corporations focusing on bentonite based products and services. Our mining facilities are located at Kutch, Gujarat and processing plants at Kutch and Ahmedabad, Gujarat. Our bentonite products are developed using indigenous technologies and are a result of strong commitment to continuous research. The three major areas where our products and expertise are currently being applied are nuclear and toxic waste management, polymer-clay nanoparticle composites and the foundry industry. Recently we have tied up with Shah-Schulman Center for Surface Nanotechnology where collaborative research on clay-polymer nanocomposites will be undertaken. We plan to expand research as well as manufacturing activities in the fields of oil bleaching and bio-diesel production over the next 5 years

For more information, please visit

<https://www.indiamart.com/jani-clays/aboutus.html>



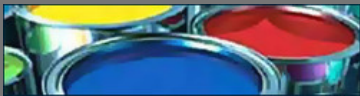
OTHER PRODUCTS



Nanoclay For Polymer Composites



Nanoclay For Water Treatment



Nanoclay for Paints And Inks



Clay

Factsheet

Nature of Business

:Manufacturer



CONTACT US

Jani Clays Pvt. Ltd.

Contact Person: Rashik Patel

Plot No. 4904 & 4905, Phase Iv, G.I.D.C., Vatva,
Ahmedabad - 382445, Gujarat, India



+91-8048361312



<https://www.indiamart.com/jani-clays/>