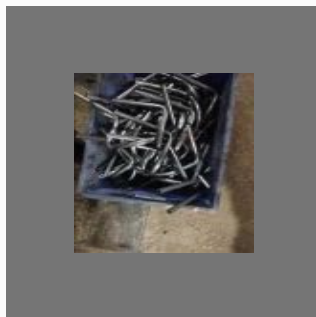


+91-8048371873

K.S.Engineering Works

<https://www.indiamart.com/ks-engg-faridabad/>

Manufacturer of precision machined components, sheet metal and also offering site fabrication services.



About Us

With a business expertise that spans across 23 years, we, **K.S. Engineering Works** have gained the reputation of being one of the biggest names in the industry. Established in the year 1978, we are a time honored organization and have distinguished ourselves as the biggest **manufacturer, exporter, trader and supplier** of a wide range of technologically advanced **Plywood Machinery**. Over the years, our flawless machines have widely been used in almost every corner of the world to process plywood.

Owing to our economy friendly prices, prompt delivery and excellent after sales services, we have been able to develop a large client base throughout the world. We are also the home to some of the most experienced professionals in the industry. These personnel work in a streamlined manner to develop and design process improvements. With the aim of enhancing customer satisfaction, we ensure best quality of **Seasoning Chamber and Dipping Machine**.

For more information, please visit

<https://www.indiamart.com/ks-engg-faridabad/aboutus.html>



CLAMPS



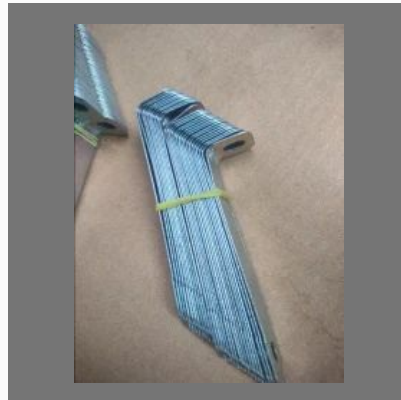
Clump



Clump



Clump Small



Clump

COPPER PIPE



Ac Pipe Small



Ac Pipe

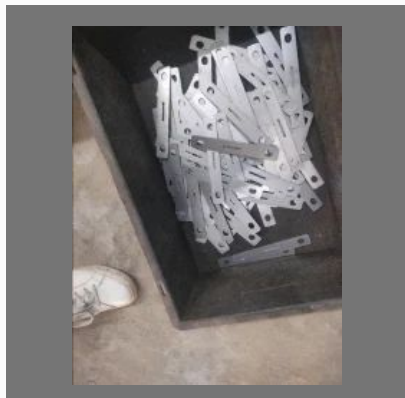


Ac Pipe



Ac Pipe

OTHER PRODUCTS:



Clamp



Sheet Metal Components



Sheet Metal Component



Clips

OTHER PRODUCTS:



Clip



Lock Pati

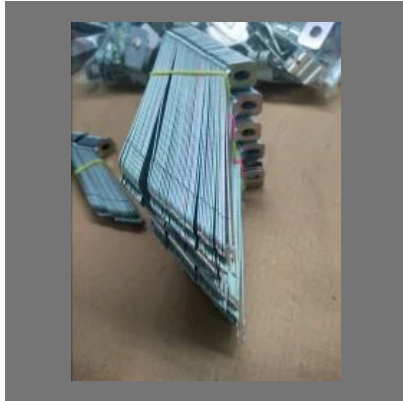


Lock Pati



Eddie Jali

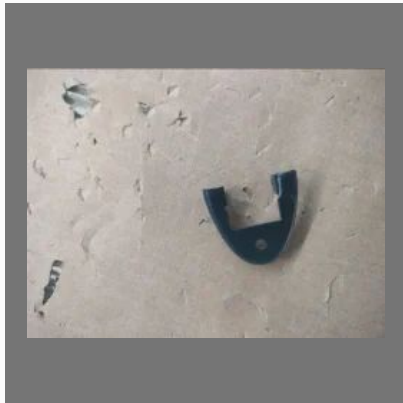
OTHER PRODUCTS:



Clump Big



Pati Jali



Jali

Factsheet

Nature of Business

:Manufacturer



CONTACT US

K.S.Engineering Works

Contact Person: Ranjay Kumar Singh

No. 14/1, Mathura Road, Behind Batra Auto
Faridabad - 121003, Haryana, India



+91-8048371873



<https://www.indiamart.com/ks-engg-faridabad/>