

# S53 Enterprises

<https://www.indiamart.com/s53enterprises/>

**S53 Enterprises** is listed amongst the famous **wholesaler** and **trader** of an exceptional quality array of **Door Kits, Wooden Door,** etc.



## About Us

Incepted in the year **2013**, **S53 Enterprises** is listed amongst the famous **wholesaler** and **trader** of an exceptional quality array of **Door Kits, Wooden Door**, etc. The provided products are widely cherished and acknowledged for their various attributes such as elevated durability, high tensile strength, sturdy structure and longer life. Our patrons can avail these products from us in different sizes, specifications and dimensions as per their needs. The entire range of product is available in the market at most competitive prices. Offered products are manufactured by the certified vendors of the market using quality approved raw materials and innovative techniques. Apart from this, the quality auditors of our team thoroughly check each and every product on predefined parameters to ensure its faultless quality in accordance with the global standards of quality. Under the supervision of our mentor, **Mr. Huzefa Noveltywala**.

**For more information, please visit**

<https://www.indiamart.com/s53enterprises/profile.html>



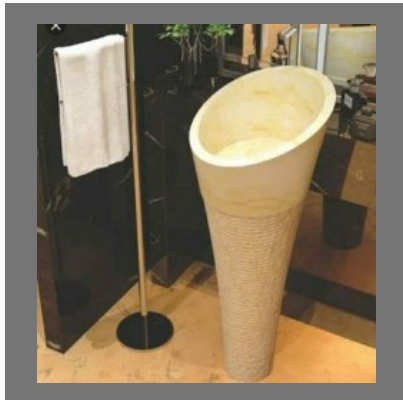
# WASH BASIN



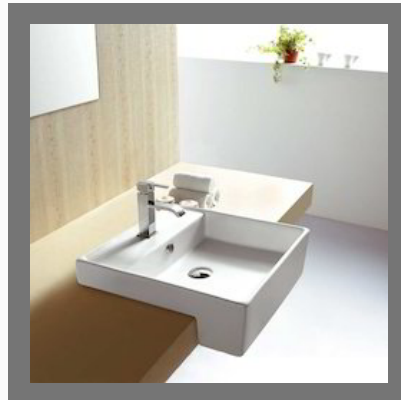
Ceramic Wash Basin



Pedestal Wash Basin



Designer Pedestal Wash Basins



Designer Wash Basin

# ASIAN PAINTS



Asian Paints Apcolite Premium Gloss Enamel



Asian Apcolite Emulsion Paints



Asian Paint Tractor Emulsion Paints



Asian Royale Aspira Emulsion Paints

# TOILET SEAT



Indian Toilet Seat



One Piece WC



Eros Toilet Seat

# BERGER PAINT



Berger Silk Glamor Emulsion Paint

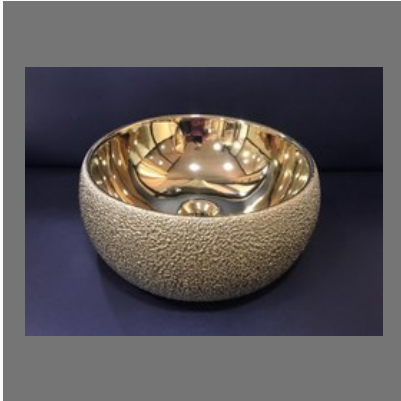


Berger Rangoli Emulsion Paints



Berger Bison Emulsion Paints

## OTHER PRODUCTS:



Wash Basin



Asian Royale Emulsion Paints



Kitchen Sink



28X24 Inch Stainless Steel  
Kitchen Sink

## OTHER PRODUCTS:



Fevicol SH Synthetic Resin Adhesive



Fevicol Marine Waterproof Adhesive



Solid Wooden Door



Burma Teak Wood Door



# Factsheet

Year of Establishment : 2013

---

Nature of Business : Wholesale Trader

---

Total Number of Employees : Upto 10 People

---



## CONTACT US

### **S53 Enterprises**

Contact Person: Huzefa

1060/12, Nanda Nagar Patni Pura  
Indore - 452002, Madhya Pradesh, India



+91-7971377732



<https://www.indiamart.com/s53enterprises/>