



+91-8046065919

# Shine System Solution

<https://www.indiamart.com/shinesystemsolution/>

We “Shine System Solution” are a prominent firm that is engaged in manufacturing and trading of a wide range of Carbon Monoxide Alarm, HMI Panel, Pressure Switch, Induction And Stepper Motor, AC Drives, Laboratory Rotameter, etc.



## About Us

Established in the year **2010**, we “**Shine System Solution**” are a prominent firm that is engaged in **manufacturing and trading** of a wide range of **Carbon Monoxide Alarm, HMI Panel, Pressure Switch, Induction And Stepper Motor, AC Drives, Laboratory Rotameter**, etc. Located in **Ahmedabad (Gujarat, India)**, we are **Sole Proprietorship** firm and we provide these products at reasonable prices. These products are widely demanded by our clients for their varied associated attributes. Under the headship of “**Mr. Ashvin Vataliya**” (**Proprietor**), we have gained a remarkable and strong position in the market.

**For more information, please visit**

<https://www.indiamart.com/shinesystemsolution/profile.html>



# HONEYWELL LIMIT SWITCH



Honeywell Limit Switches



Honeywell BXIND Flame Proof Limit Switch



Honeywell SZL-VL-S-A Limit Switch



Honeywell SZL-VL-S-C Limit Switch

# HONEYWELL CONTROLLER



Honeywell DC1030 PID/On-Off Temperature Controller



Honeywell PID Controller DC1010



Honeywell DC1020 PID/On-Off Temperature Controller



Honeywell PID Controller

# HUMIDITY SENSOR



SCTHWA43SDS Honeywell  
Humidity Temp Sensor



H7080B3273 Honeywell T Rh  
Sensors



Honeywell Duct Temperature  
Humidity Sensor H7080B



Duct Mounted Humidity &  
Temp Sensor

# LIMIT SWITCH



Honeywell SZL-VL-S-G Limit Switch



Honeywell SZL-WL-D Limit Switch



Honeywell SZL-WL-G Limit Switch



Honeywell SZL-WL-A Limit Switch

# TEMPERATURE AND LEVEL CONTROLLER



Temperature Controllers



Ceramic Beads



Be/Cu Inline Barrel  
Connectors



Type K Mini Plug Plus Power -  
CF Flange, Single-Ended

# AC DRIVES



AC Drives



Lenze Drive 2.2 KW 3 Phase  
AC Drives



Delta AC Drives



Delta C 2000 Drive



# ELECTRONICS COMPONENTS AND MODULES



Mouser Electronics



Switch Mode Power Supply



Belden Cable

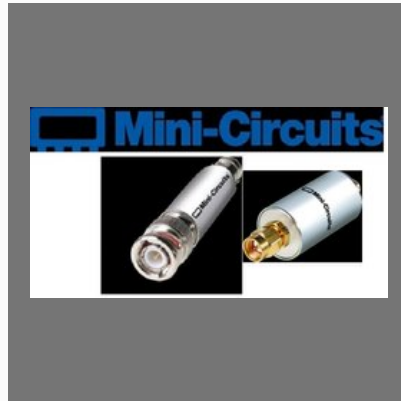


Semikron IGBT

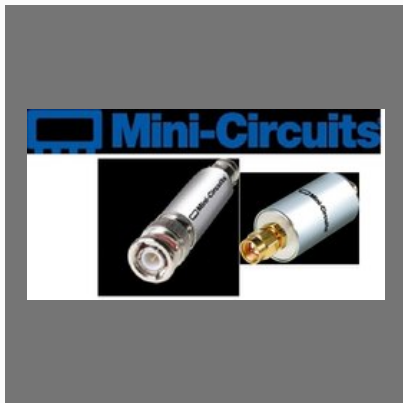
# RF CABLE AND CONNECTOR



Right angle connector



SHP-50 Lumped LC High Pass Filter, 41 - 800 MHz  
Connector Type: SMA



SHP-100 Lumped LC High Pass Filter, 90 - 2000 MHz  
Connector Type: SMA



NHP-25 Lumped LC High Pass Filter, 27.5 - 800 MHz

## OTHER PRODUCTS:



Honeywell SZL-VL-S-E Limit Switch



Honeywell PID Controller DC1040

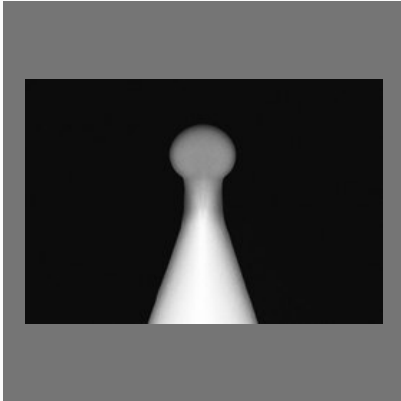


Wall Mount Temp & Humidity Sensor



Honeywell ZLDA01A2Y Limit Switch

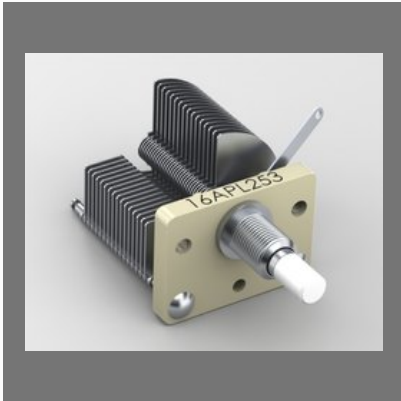
## OTHER PRODUCTS:



Silicone Probe



Fuji Frenic Mega VFD AC Drives



air-dielectric variable capacitors.

# Factsheet

Year of Establishment : 2010

---

Nature of Business : Manufacturer

---

Total Number of Employees : 11 to 25 People

---



## CONTACT US

### **Shine System Solution**

Contact Person: Ashvin Vataliya

Office No. 37, Murlidhar Society  
Ahmedabad - 382350, Gujarat, India



+91-8046065919



<https://www.indiamart.com/shinesystemsolution/>