



+91-8048371613

Shree Sai Vishva Infrastructure And Investment

<https://www.indiamart.com/shree-saivishva-infra/>

Sai Vishva Infrastructure started in 2011 keeping in mind of the market requirement for trusted partner in real estate investment & development.

Corporate vision: The company believes in giving better and better homes with ...



About Us

Sai Vishva Infrastructure started in 2011 keeping in mind of the market requirement for trusted partner in real estate investment & development.

Corporate vision: The company believes in giving better and better homes with the edge of a tremendous price advantage. To improve the company's financial command, Sai Vishva Infrastructure intends to diversify in new & wide areas of operations along with the fulfillment of its social responsibilities. The diversification will indeed strengthen the company, thus enabling production of better housing. The company's vision is to establish itself as a one stop provider of all housing needs to customers of every segment.

Corporate Mission:

"Building Relations through Construction" is the company's motto. The directors, who have carried on the mission like torch bearers of the company

We are providing services as:

1. Own Development,
2. Maintenance up to 10 years by Company.
3. 24*7 security
4. Basic & Luxurious Amenities in all forms of projects
5. Avoids problems like Encroachments

, have always believed in the great idea of providing superlative homes at affordable costs. This belief has translated into a multiplying customer trust and confidence. The company will...

For more information, please visit

<https://www.indiamart.com/shree-saivishva-infra/aboutus.html>



OTHER SERVICES



Commercial Plots



Residential Plots



Royal Palm Construction
Service

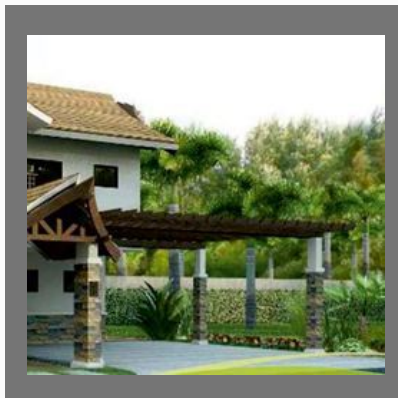


Farm House Plots

OTHER PRODUCTS:



Residential Land Dealing



Farm House



Agricultural Plots



Commercial Space

Factsheet

Year of Establishment : 2011

Nature of Business : Real Estate / Builders / Contractors

Total Number of Employees : Upto 10 People



CONTACT US

Shree Sai Vishva Infrastructure And Investment

Contact Person: Deepak Shelar

Oxigen Plaza Second Floor Tidke Colony

Nashik - 422002, Maharashtra, India



+91-8048371613



<https://www.indiamart.com/shree-saivishva-infra/>