



+91-8048719170

# Shree Hari Enterprise

<https://www.indiamart.com/shreeharienterprise/pdf1.html>

We are a leading Manufacturer, Trader and Exporter of Kitchen Equipments. Owing to their special features like high tensile strength, performance and reliability, these are extensively used in Hotels & Restaurants, food industry.



## About Us

With years of industry experience, clear vision and unconditional efforts, founder of the firm, **Mr. Sailesh Nathwani**, has blessed the organization in achieving infinite success. Established in the year 1999, at Rajkot, Gujarat, India, we “**Shree Hari Enterprise**”, are a reputed **Manufacturer, Exporter, and Trader of Commercial Kitchen**. In our product range, we offer **Food Processing Machine, Snack Processing Machine, Dry Fruit Processing Machines and much more**. All the equipment are designed in compliance with latest style and requirements of our customers. We use a superior material in the manufacturing of this equipment, that provides our range with reliable and superior performance. In addition to this, we also offer Consultation Services with regards to designs of kitchens equipment and layout plans to suit our customers need.

**For more information, please visit**

<https://www.indiamart.com/shreeharienterprise/pdf1.htmlprofile.html>



# FOOD PROCESSING EQUIPMENT

Our Products



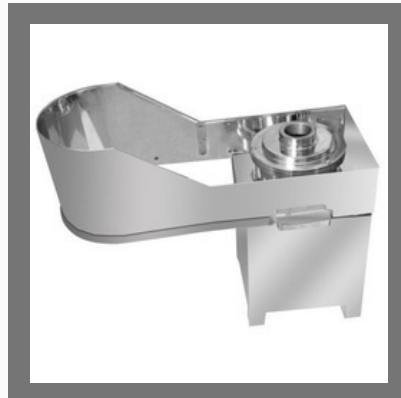
Gravy Machine



Atta Kneading Machine



Vegetable Cutting Machine



Banana Wafer Machine

## OTHER PRODUCTS:



Pulverizer Machine



2 In 1 Dry & Wet Grinder



Chutney Machine



Pista Chips Cutting Machine

# Factsheet

Year of Establishment : 2001

---

Nature of Business : Manufacturer

---

Total Number of Employees : Upto 10 People

---



## CONTACT US

### **Shree Hari Enterprise**

Contact Person: Sailesh Nathwani

No. 40, Jimmy Towers, Opposite Swaminarayan Gurukul Gondal Road  
Rajkot - 360002, Gujarat, India



+91-8048719170



<https://www.indiamart.com/shreeharienterprise/pdf1.html>