

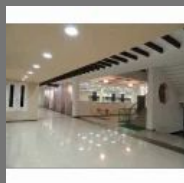


+91-8062245435

Swami Electricals

<https://www.indiamart.com/swamielectricals/>

Licenced Electrical contractor, We are providing services for Lisionnig with MSEDCL, HT oveheadline work, HT/LT Electrification works for Engineering/manufacturing organizations. Manufacturer and Supplier of PCC, MCC, PLC Panel, Distribution Board, etc.



About Us

Incepted in the year **2009**, by “**Datta Dalvi (Proprietor)**”, at **Pune (Maharashtra, India)**, we, “**Swami Electricals**”, are engaged in **manufacturing** and **supplying** the best quality **Electrical Panel, Industrial Panel, Control Panel, PLC Panel, Distribution Board, Street Light, Industrial Product** and **VC Room**. We manufacture the entire range using supreme quality raw material and advanced technology. Backed by an advanced production unit, we follow strict manufacturing process and develop the entire range using advanced engineering concepts. The offered range is well-known among clients for its minimum maintenance, enhanced durability, excellent functionality and reliable performance. Also, we are engaged in providing superior quality **Electrical Contractor** and **Office Lighting Services**. Clients can avail the offered range and services from us at market leading rates. We have support of high-tech infrastructure that comprises an array of advanced workstations, cutting edge technology. This unit is alienated into various sub units like manufacturing, quality testing, sales and marketing to manage work flow in an organized manner. Our each section is handled by team of adept professional who have respective knowledge of domains to produce world class products. The bulk orders are delivered in prompt manner owing to our modern infrastructure unit. Also, to grow in the market...

For more information, please visit

<https://www.indiamart.com/swamielectricals/profile.html>



ELECTRICAL EQUIPMENT



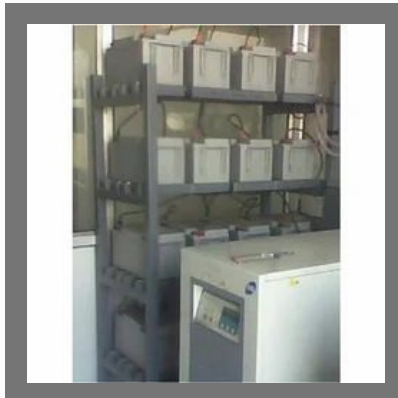
Electrical Cord



Electrical Cable Tray



Electric Socket Box



Office UPS

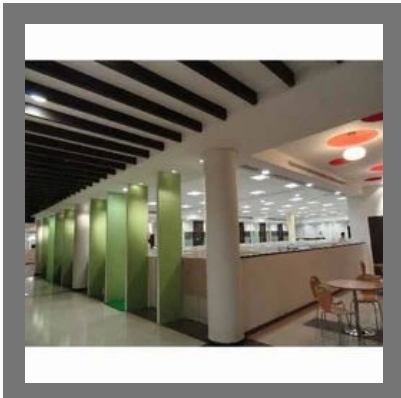
COMMERCIAL LIGHTING SERVICE



Lighting Service



Commercial Lighting Service



Office Lighting Service



Shop Lighting Service



Soldering Guns



Pipe Wrench



Multisocket Wrench



Ring Spanner

CONTROL PANEL



MCC Control Panel



Motor Control Panel



Electrical Control Panel

DISTRIBUTION BOARD



Electric Distribution Board



Industrial Distribution Board

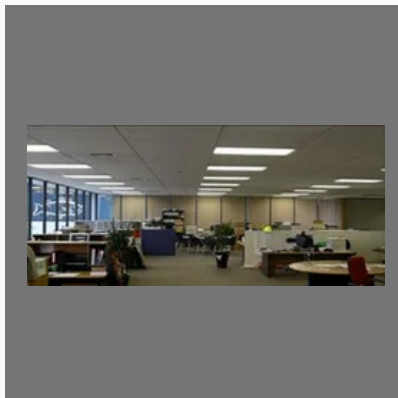


Distribution Board MCB DB's

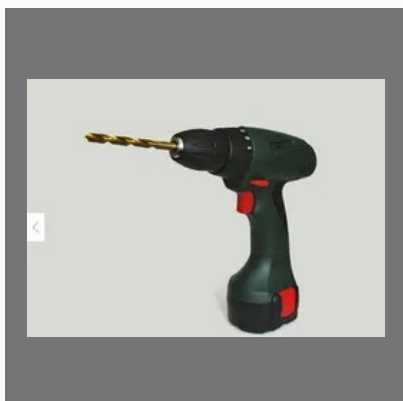
OTHER PRODUCTS:



Control Panel Service



Office Lighting Service



Drill Guns



Electrical Contractor Service

Factsheet

| | |
|---------------------------|-------------------|
| Year of Establishment | : 2006 |
| Nature of Business | : Manufacturer |
| Total Number of Employees | : 11 to 25 People |



CONTACT US

Swami Electricals

Contact Person: Datta Dalvi

S. No. 38/3/1, Garmala Colony, Nakhate Wasti, Rahatani, Pimpri
Pune - 411017, Maharashtra, India



+91-8062245435



<https://www.indiamart.com/swamielectricals/>