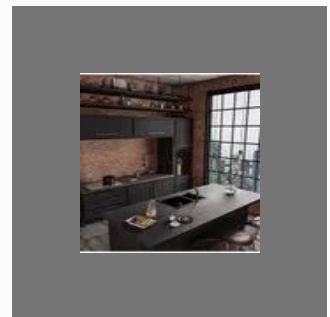
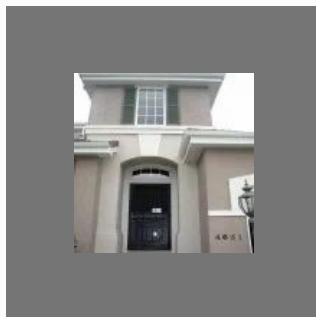




+91-7942547142

swayam enterprises

<https://www.indiamart.com/swayamenterprises-pune/>



About Us

Established in the year **2010** we “**Swayam Enterprises.**” are engaged as the **Electrical Wires, Switch Plate, MCB Switch**, etc. They are known to make use of the best quality components, coupled with the latest technology.

We have an advanced infrastructural base that is equipped with all the essential amenities. Thus, we aim to understand the diverse needs of our clients and offer suitable range of products. Being a client-centric firm, our main is to accomplish the customers’ needs very competently.

Under the guidance of our mentor “**Mr. Sunny Pawar.** ” we have become the best option of our clients. Our mentor has years of understanding of this arena.

For more information, please visit

<https://www.indiamart.com/swayamenterprises-pune/profile.html>

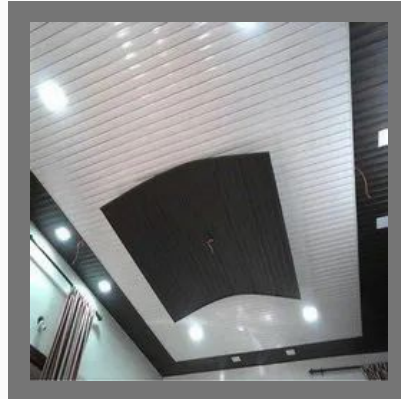


INTERIOR DESIGNING

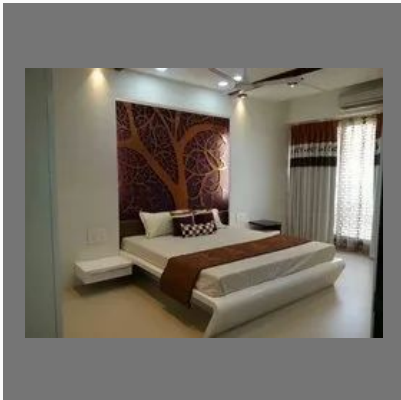
Our Product Range



Modular Kitchen Services



PVC Ceiling Panel



Home Furniture Services



Modular Kitchen Shutter

BUILDING SERVICES

Our Product Range



Painting Services Of Interior And External



Construction Contractor Service

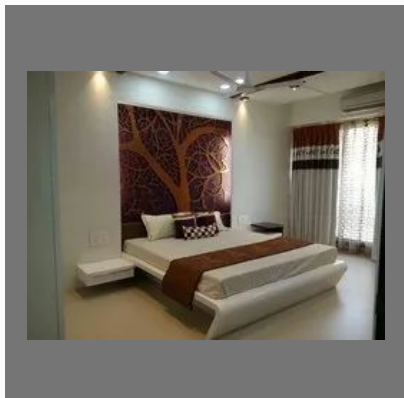


RCC and Centering construction services

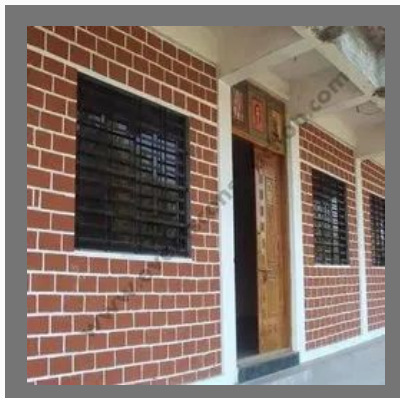


Bricks And Blocks And Stones

OTHER PRODUCTS:



Residential Interior Designing Services



Brick Wall construction services



All Shape Modular Kitchen



Kitchen Trolley Basket

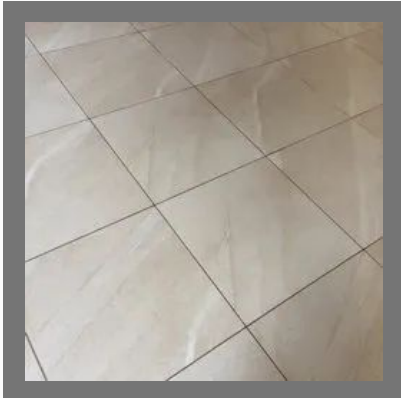
OTHER PRODUCTS:



Railing Fabrication Work



Sliding Windows



Flooring Service



WallPaper/3d Mural

Factsheet

Year of Establishment : 2010

Nature of Business : Wholesale Trader

Total Number of Employees : 26 to 50 People



CONTACT US

swyam enterprises

Contact Person: Sunny Pawar

B-8 Sr. No 51A/1A/1, Pawar House, Ganesh Colony Kalepada
Pune - 411028, Maharashtra, India



+91-7942547142



<https://www.indiamart.com/swyamenterprises-pune/>